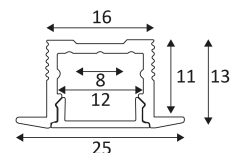
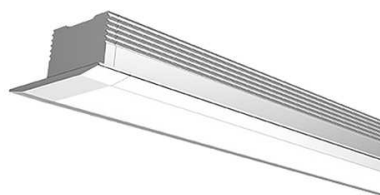
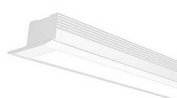


# PR130

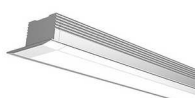
- Recessed profile for LED strip.
- Compatible with ST104, ST150, ST153, ST125, ST160, ST132.
- Recessed 10x13x2000mm.
- Polycarbonate diffuser, 2 end caps supplied.
- LED strip and converter to be ordered separately.






CODE	COLOR	MATERIAL	L (mm)
PR13030	MATT WHITE	ALUMINIUM	2000
PR13052	ALUMINIUM	ALUMINIUM	2000



MATT WHITE



ALUMINIUM

ACCESSOIRES	COLOR	MATERIAL	DESCRIPTION	
PR13130	MATT WHITE	POLYCARBONATE	END CAP WITH HOLE 2PC	
PR13152	ALUMINIUM	POLYCARBONATE	END CAP WITH HOLE 2PC	
PR13252	ALUMINIUM	INOX 304	RECESSED BUCKLE 4PC	



Recessed wall mounting only.



Recessed ceiling mounting only.



Indoor use only.



Protected against the ingress of solid bodies greater 12 mm. No protection against the ingress of liquids.



Product in conformity CE.



Power supply not included.



3 years warranty.